

STOP THE ASIAN CITRUS PSYLLID!



Adult psyllid -1/8 inch



Eggs tucked inside new citrus flush



Young stages with waxy tubules



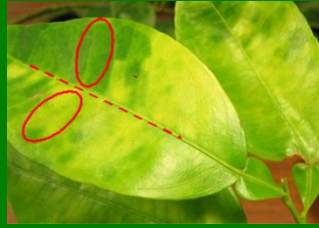
New citrus flush is twisted or burnt back

The psyllid is a carrier of the bacterial disease Huanglongbing (citrus greening disease). The psyllid feeds on citrus and closely related plants.

**IF YOU SEE THIS PSYLLID IN CALIFORNIA
CALL 1-800-491-1899
California Dept. of Food and Agriculture**



STOP HUANGLONGBING = CITRUS GREENING DISEASE!



Asymmetrical leaf blotch



Lopsided, bitter, hard fruit with dark seeds



Diseased - Healthy



Yellow shoots

This devastating disease of citrus is spread by the psyllid.

**IF YOU SUSPECT THAT YOUR CITRUS HAS THIS DISEASE
CALL 1-800-491-1899
Calif. Dept. of Food and Agriculture**

*G. Vidalakis and E. Grafton-Cardwell
University of California
ANR Core Grants Program*

Photos by M. Rogers and M. Keremane